

High Performance WDR Network Camera

SNC-570

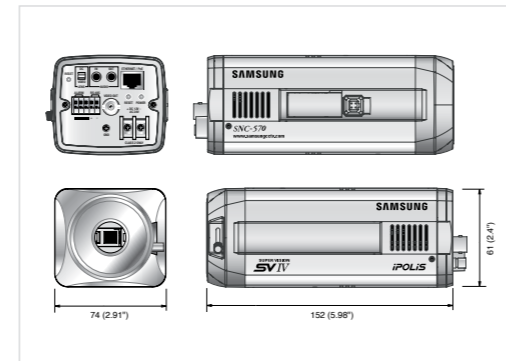


Specifications

	SNC-570N	SNC-570P
VIDEO		
Imaging Device	1/3" Vertical double density interline CCD	
Total Pixels	811(H) x 508(V)	795(H) x 596(V)
Effective Pixels	768(H) x 494(V)	752(H) x 582(V)
Scanning System	2 : 1 Interlace	
Frequency	H : 15.734 KHz / V : 59.94 Hz	H : 15.625 KHz / V : 50Hz
Horizontal Resolution	Color : 560TV lines (Min.), B/W : 700 TV Lines (Min.)	
Min. Illumination	Color : 0.3 Lux (50 IRE@F1.2), 0.001 Lux (Sens-up, 256X) B/W : 0.01 Lux (50 IRE@F1.2)	
S / N (Y signal)	52dB	
On Screen Display	Built-in (Multi-language support)	
Camera Title	On / Off	
Day & Night	Auto (ICR) / Color / B/W	
Backlight Compensation	WDR / BLC / HLC / Off	
Dynamic Range	52dB	
Motion Detection	On / Off (Output via communication)	
Digital Image Stabilization	On / Off	
Privacy Masking	On / Off (8 Programmable zones)	
3D Noise Filter (SSNR II)	On / Off (Level adjustable)	
Sens-up (Frame Integration)	Auto / Off (Selectable limit ~ 256X)	
Gain Control	High / Low / Off	
White Balance	ATW / AWC / Manual / Indoor / Outdoor	
Electronic Shutter Speed	Auto (NTSC : 1/60 ~ 1/120,000sec, PAL : 1/50 ~ 1/120,000) / Manual / A.FLK	
PERFORMANCE		
Encoding	Resolution	Up to 704 x 480
	Compression	MPEG-4 / JPEG dual codec
	Encode Rate	Up to 30fps@704 x 480
Network	Transmission Speed	Up to 100Mbps
	Max. Remote Users	20 Simultaneously
	Protocol Support	RTP/UDP, RTP/Multicast, RTSP, TCP/IP, DHCP, DNS, DDNS, HTTP, SMTP, FTP, PPPoE and NTP
Security	Video Analytics	Object detection (Appear / Disappear)
Security	Password Protection	5 User level
INTERFACE		
Monitor	Output	1 BNC (560TV lines)
	Input	1 Line / MIC in, Mono, 1Vpp, 5.6K ohm
Audio	Output	1 Line out, 1Vpp
	Compression	ADPCM
	Sampling Rate	8KHz
Alarm	Inputs	Terminal 1 input, NO/NC
	Outputs	Terminal 1 output, NO/NC
	Remote Notification	Via e-mail or FTP
Connections	Ethernet	RJ-45 10/100 Base-T
Storage	PTZ Control Interface	RS-485
	SD(SDHC) Memory	Stored event image, Back up
GENERAL		
Input Voltage	Dual (12V DC/ 24V AC), PoE (IEEE 802.3af)	
Power Consumption	Max. 8.5W	
Operating Temperature	-10°C ~ +50°C	
Operating Humidity	30% ~ 80% RH	
Dimension (WxHxD)	74 x 61 x 152mm (2.91" x 2.4" x 5.98")	
Weight	580g (1.28 lb)	
Lens Mount	C / CS	

Dimensions

Unit : mm (inch)



Software

64 Channel Network Central Management Software



SNM-64S/128S (Standard) / SNM-64P/128P (Optional)

32/16/9 Channel Network Recorder Software



SNR-32A/16/A/9A

Intelligent Camera at the Edge of Your Network



High Performance WDR Network Camera

SNC-570

imagine Advanced Network Video Security

The SNC-570 network camera uses the latest SV-IV DSP and an advanced network codec chipset allowing for high quality images and multiple network capabilities at the same time. This camera supports both MPEG-4 and JPEG codecs with the ability to deliver 6 different streams simultaneously. With advanced features such as object detection, de-interlacing, SD memory card slot for event data recording, and both dual voltage and Power over Ethernet (PoE) for easy installation, the SNC-570 network camera is a perfect solution.



The Eco mark represents Samsung Techwin's will to create environment-friendly products, and indicates that the product satisfies the EU RoHS Directive.

Design and specifications are subject to change without notice.



SAMSUNG TECHWIN CO., LTD.
145-3, Sangdaewon 1-dong, Jungwon-gu, Seongnam-si, Gyeonggi-do Korea 462-703
Tel : +82-31-740-8151-8 Fax : +82-31-740-8145
www.samsungipolis.com

SAMSUNG TECHWIN AMERICA
1480 Charles Willard St. Carson, CA 90746, UNITED STATES
Tel : +1-310-632-1234 Fax : +1-310-632-2195
www.samsungcctvusa.com

SAMSUNG OPTO-ELECTRONICS UK, LTD.
Samsung House, 1000 Hillwood Drive, Hillwood Business Park
Chertsey, Surrey, UNITED KINGDOM KT16 0PS
Tel : +44-1932-45-5308 Fax : +44-1932-45-5325

TIANJIN SAMSUNG OPTO-ELECTRONICS CO., LTD.
No.9 Zhangheng Street, Micro-Electronic Industrial Park
Jingang Road, Tianjin, P.R. CHINA 300385
Tel : +86-22-23887788-8503 Fax : +86-22-23887788-8505

■ DISTRIBUTED BY



I.D-0811

SAMSUNG TECHWIN





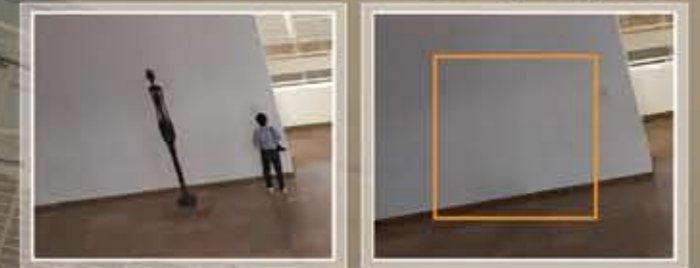
Developed by Samsung Techwin, the embedded software in the SNC-570 network camera delivers the best performance and highest quality. Experience the Samsung Techwin's network solution today.

Up to 6 Multi-Streaming Formats Intelligent Video Analytics

High Performance WDR Network Camera

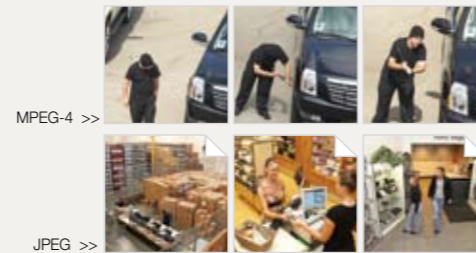
SNC-570

Missing Object



MPEG-4/JPEG Dual Codec, Full Resolution in Real-Time

The SNC-570 utilizes Samsung Techwin's unique MPEG-4/JPEG dual codec technology that retains high image quality even while compressing at high data rates. With this technology, the SNC-570 delivers full resolution video at 30fps over the network.



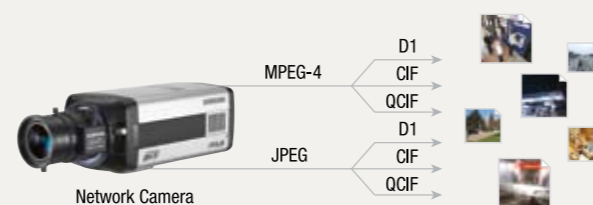
Feature-Rich Network Camera

The SNC-570 features are powered by the 4th generation Samsung Techwin SV-IV DSP providing high resolution up to 560TV lines in color and clear images even at ultra-low light levels of 0.3 Lux. The SNC-570 is a feature rich network camera that includes Wide Dynamic Range, clear images 24 hours a day with its ICR Day & Night function, and 3D noise reduction filter, SSNR.II.



Real-Time Multi-Stream

The SNC-570 can encode 6 different streams (MPEG-4/JPEG in D1, CIF, QCIF) simultaneously in real-time giving users the flexibility to set optimal transmission settings for the network infrastructure.



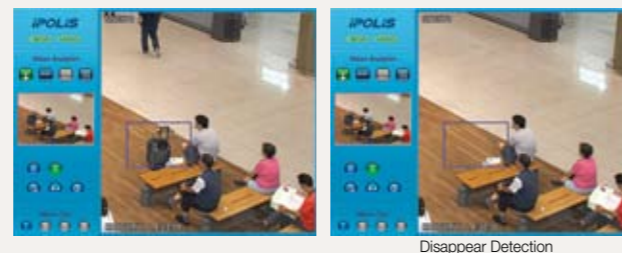
Powerful CMS Software, Samsung Network Manager

The SNC-570 is supported by the powerful CMS software. The Samsung Network Manager software provides the ability to monitor up to 64 channels on a single screen and up to 128 channels in dual monitor mode.



Intelligent Video Analytics

The object detection feature allows users to define an object or area in the scene. When the stationary object is removed, an alarm is triggered. If a stationary object is left in the scene area, an alarm is triggered. These events can be stored locally in an SD memory card or pushed out to the CMS and network recorder.



SD Memory Card Slot for Local Storage

The SNC-570 network camera comes with an internal SD memory card slot that is used to store or back up videos that have been triggered by events.



PoE and Dual Power (12V DC/24V AC)

The SNC-570 network camera comes standard with Power over Ethernet (PoE), enabling both power and video/audio transmissions through a single Ethernet cable. Reduced cabling requirements make installation easier and more cost effective.

