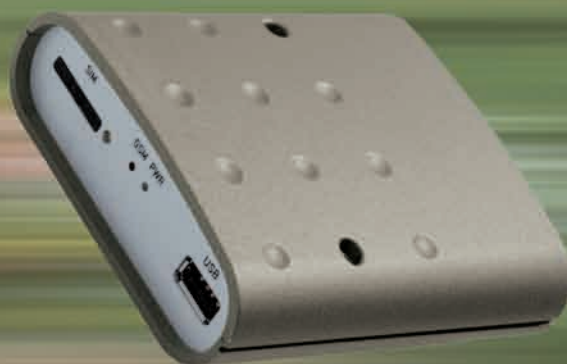


UMTS/HSDPA router UR5

new



speed up to 3,6 Mb/s



Connection of ATM

Interconnection PC or LAN

Interconnection of industrial control systems

Traffic, security and surveillance cameras

UMTS/HSDPA router UR5 interconnects large variety of equipment into Internet or intranet. Namely computers, controlling systems or LAN networks. Router is standardly equipped by ethernet 10/100 and USB type A. We can also deliver version with one more port RS232/RS485/MBUS or inputs/outputs (I/O) on request of customer. The second port enables to connect any device with above mentioned interface such as ATM, various industrial metering devices, GPS etc. by high speed UMTS/HSDPA wireless technology.

High speed technology UMTS allows to transfer data up to 384 kb/s. This is effective speed for example in picture transfer from traffic cameras (traffic density, crossroad cameras etc.) or security and surveillance sector (building control, street spotting etc.). Furthermore High Speed Downlink Packet Access technology (HSDPA) increases speed for downlink up to

3,6 Mb/s. This extra downlink speed enables even transferring movie. If UMTS or HSDPA is not available UR5 switches to slower EDGE technology (up to 236 Kb/s) or GSM-GPRS (up to 85,6 Kb/s).

The main advantages of UR5 is extra high communication speed and a short response rate thanks to UMTS/HSDPA technology. Router is designed to work in the professional applications requesting large data transmission loads in a short time interval via mobile wireless network – ideal is for all camera applications. Other benefit is a user friendly configuration using web interface (HTTP) secured by password. It means you can configure parameters of UR5 from your computer by standard web browser (MS Explorer, Mozilla-Firefox etc.) from all over the world. Really easy is also firmware updating – the last firmware edition is ready for downloading from our company website www.conel.cz.

for devices with interface

ethernet
USB ■ RS232 ■ RS485 ■ MBUS ■ I/O

DHCP

HTTP

NAT

NTP

L2TP

IPsec

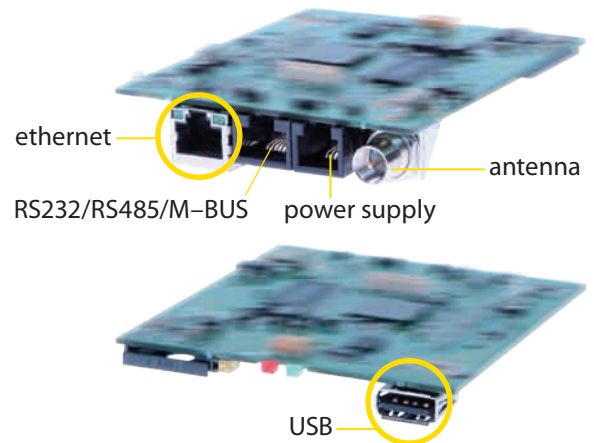
DynDNS

SMS info

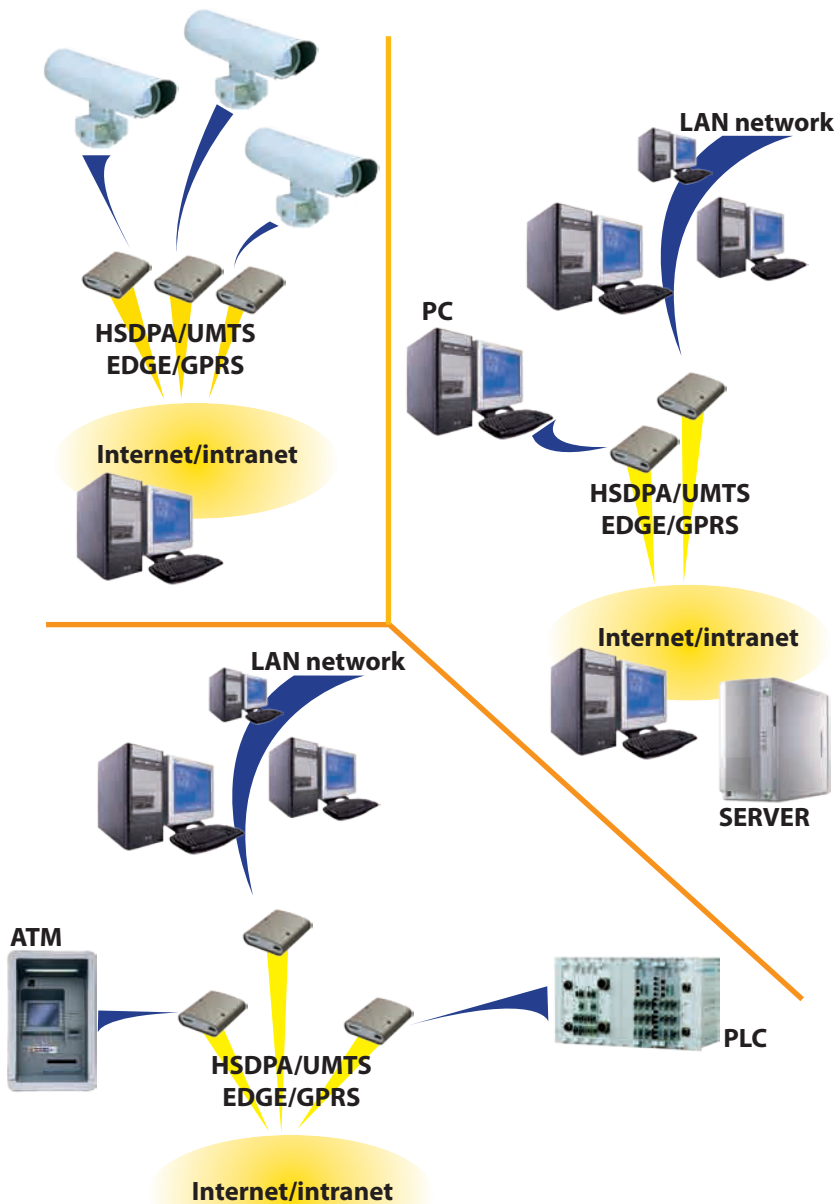
FTP

UMTS/HSDPA router UR5 supports

- DHCP – automatic IP addressing in LAN network
- HTTP server – configuration via web server
- NAT – address translation between inside/outside networks
- SMS info
- IPsec – secure (cryptated) connection to server in outside network
- L2TP – protocol of tunneling interconnection
- DynDNS – access to router UR5 with dynamic IP address
- NTP – time synchronization
- FTP – passive incoming and active outgoing FTP connection
- GPRS/UMTS/HSDPA signalization by LED
- information on GSM signal level (strength, BTS, back-up channels etc.)
- RS232/RS485/MBUS or I/O port 2 available on request of customer
- on request of customer 2 SIM cards possible



Application examples of UR5



Technical specification

GSM module	SIEMENS HC15
Comply standards	3GPP TS 51.010-1 • 3GPP TS 34.121 • 3GPP TS 34.123-1 • 3GPP TS 34.123-3 • ETSI EN 301 511 V9.0.2 • ETSI EN 301 489-1 V1.4.1 • ETSI EN 301 489-7 V1.2.1 • EN 60950-1 (2001) • EN 301 489-24 V1.2.1 • EN 301 908-01 V2.2.1 • EN 301 908-02 V2.2.1 • EN 61 000-3-2 • EN 55 022
Frequency bands	EGSM900, GSM1800 UMTS 2100, WCDMA FDD Bdl GSM 900 8-PSK GSM 1800 8-PSK
HSDPA parameters	3GPP rel. 5 standard data speed 3,6 Mbps/384 kbps UE CAT. 1 až 6, 11, 12 data compression 3GPP TS25.212
UMTS parameters	W-CDMA FDD standard PS data speed – 384/384 kbps CS data speed – 64/64 kbps
GPRS parameters	GPRS multislot class 10, CS 1 to 4 EGPRS multislot class 10, CS 1 to 4, MCS 1 to 9
Temperature range	from -20 °C to +55 °C
Power supply	10 V to 30 V DC
Energy consumption	300 mW without transmission up to 3,5 W (GPRS) up to 5,5 W (UMTS/HSDPA)
Dimensions	30×90×102 mm (DIN ledge 35 mm)
Weight	150 g
Antennal connector	FME – 50 Ohm
User interface	Ethernet (10/100 Mbit/s) USB 2.0 type A host Port 1 – on request RS232/RS485/MBUS or inputs/outputs (I/O)