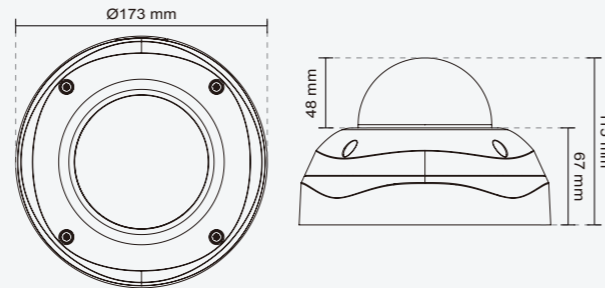


Technical Specifications

System <ul style="list-style-type: none"> CPU: Multimedia SoC Flash: 16MB RAM: 256MB Embedded OS: Linux 2.6 	Alarm and Event Management <ul style="list-style-type: none"> Triple-window video motion detection Tamper detection One D/I and one D/O for external sensor and alarm Event notification using HTTP, SMTP or FTP Local recording of MP4 file
Lens <ul style="list-style-type: none"> Board lens, vari-focal, f = 3 ~ 9 mm, F1.2 (wide), F2.1 (tele), auto-iris, remote focus Removable IR-cut filter for day & night function 	On-board Storage <ul style="list-style-type: none"> MicroSD/SDHC card slot Stores snapshots and video clips
Angle of View <ul style="list-style-type: none"> 31.7° ~ 93.0° (horizontal) 23.8° ~ 68.4° (vertical) 39.6° ~ 118.9° (diagonal) 	Security <ul style="list-style-type: none"> Multi-level user access with password protection IP address filtering HTTPS encrypted data transmission 802.1X port-based authentication for network protection
Shutter Time <ul style="list-style-type: none"> 1/5 sec. to 1/32,000 sec 	Users <ul style="list-style-type: none"> Live viewing for up to 10 clients
Image Sensor <ul style="list-style-type: none"> 1/2.7" progressive scan CMOS sensor in 1920x1080 resolution 	Dimension <ul style="list-style-type: none"> Ø 173 mm x 115 mm
Minimum Illumination <ul style="list-style-type: none"> 0.57 Lux @ F1.2 (1/30S) 0.08 Lux @ F1.2 (1/5S) 0.001 Lux @ F1.2 (B/W) 	Weight <ul style="list-style-type: none"> Net: 1296 g
Video <ul style="list-style-type: none"> Compression: H.264, MJPEG & MPEG-4 Streaming: <ul style="list-style-type: none"> Multiple simultaneous streams H.264 streaming over UDP, TCP, HTTP or HTTPS MPEG-4 streaming over UDP, TCP, HTTP or HTTPS H.264/MPEG-4 multicast streaming MJPEG streaming over HTTP or HTTPS Supports activity adaptive streaming for dynamic frame rate control Supports video cropping for bandwidth saving Supports ePTZ for data efficiency Supports 3GPP mobile surveillance Frame rates: <ul style="list-style-type: none"> H.264: <ul style="list-style-type: none"> Up to 30 fps at 1920x1080 MPEG-4: <ul style="list-style-type: none"> Up to 30 fps at 1920x1080 MJPEG: <ul style="list-style-type: none"> Up to 30 fps at 1920x1080 Interface: <ul style="list-style-type: none"> Audio/Video output NTSC/PAL video output switch 	LED Indicator <ul style="list-style-type: none"> System power and status indicator
Image Settings <ul style="list-style-type: none"> Adjustable image size, quality and bit rate Time stamp and text caption overlay Flip & mirror Configurable brightness, contrast, saturation, sharpness, white balance and exposure AGC, AWB, AES WDR enhanced Automatic, manual or scheduled day/night mode BLC (Backlight Compensation) Supports privacy masks 	Power <ul style="list-style-type: none"> 12V DC 24V AC Power consumption: <ul style="list-style-type: none"> Max. 4.8 W (FD8362) Max. 14.46 W (FD8362E) (with heater & fan) 802.3af compliant Power-over-Ethernet (Class 3)
Audio <ul style="list-style-type: none"> Compression: <ul style="list-style-type: none"> GSM-AMR speech encoding, bit rate: 4.75 kbps to 12.2 kbps MPEG-4 AAC audio encoding, bit rate: 16 kbps to 128 kbps G.711 audio encoding, bit rate: 64 kbps, µ-Law or A-Law mode selectable Interface: <ul style="list-style-type: none"> External microphone input Audio output Supports two-way audio Supports audio mute 	Housing <ul style="list-style-type: none"> Vandal-proof IK10-rated metal housing Weather-proof IP66-rated housing
Networking <ul style="list-style-type: none"> 10/100 Mbps Ethernet, RJ-45 Onvif support Protocols: IPv4, IPv6, TCP/IP, HTTP, HTTPS, UPnP, RTSP/RTP/RTCP, IGMP, SMTP, FTP, DHCP, NTP, DNS, DDNS, PPPoE, CoS, QoS, SNMP, and 802.1X 	Approvals <ul style="list-style-type: none"> CE, LVD, FCC, VCCI, C-Tick
	Operating Environments <ul style="list-style-type: none"> Temperature: <ul style="list-style-type: none"> FD8362: 0°C ~ 50°C (32°F ~ 122°F) FD8362E: -40°C ~ 55°C (-40°F ~ 131°F) Humidity: 90% RH
	Viewing System Requirements <ul style="list-style-type: none"> OS: Microsoft Windows 7/Vista/XP/2000 Browser: Mozilla Firefox, Internet Explorer 6.x or above Cell phone: 3GPP player Real Player: 10.5 or above Quick Time: 6.5 or above
	Installation, Management, and Maintenance <ul style="list-style-type: none"> Camera angle adjustment: pan 350°, tilt 80°, rotate 350° Installation Wizard 2 32-CH ST7501 recording software Supports firmware upgrade
	Applications <ul style="list-style-type: none"> SDK available for application development and system integration
	Warranty <ul style="list-style-type: none"> 36 months



All specifications are subject to change without notice. Copyright © 2011 VIVOTEK INC. All rights reserved. P/N:971004500

SUPREME
A NEW DEFINITION OF HD



Fixed Dome Network Camera FD8362/62E

2MP • Full HD • Smart Focus System • Vandal-proof



VIVOTEK FD8362/62E are professional fixed dome network cameras offering 2-Megapixel or 1080p Full HD resolution with superb image quality up to 30 fps. The cameras can capture a much more comprehensive area than a standard VGA model, significantly reducing the number of units required. It is especially suitable for monitoring wide open outdoor such as building entrances, airports or applications requiring accurate identification.

For installers, properly adjusting the focus of a megapixel network camera can be difficult due to the image detail. Thus VIVOTEK introduces the Smart Focus System including Focus Assist Button and Remote Focus to make installation and adjustment easier. VIVOTEK adopts lenses with built-in stepping motors that the installer can use to remotely control the focal length and precisely adjust the camera focus, offering hassle-free installation and maintenance.

The IP66-rated housing is designed to help the camera body withstand rain and dust and ensures operation under a multitude of harsh weather conditions. Its metal vandal-proof housing effectively provides robust protection from vandalism. Additionally, the wide temperature range further enhances the FD8362E's performance and reliability in extremely cold and warm weather.

With other advanced features such as tamper detection, 802.3af compliant PoE, MicroSD/SDHC card for on-board storage, video cropping, and e-PTZ functionality, the FD8362/62E provide the most robust solution suitable for any demanding outdoor environments.



VIVOTEK INC.
6F, No.192, Lien-Cheng Rd., Chung-Ho, New Taipei City, 235, Taiwan, R.O.C.
| T: +886-2-82455282 | F: +886-2-82455532 | E: sales@vivotek.com

VIVOTEK USA, INC.
470 Lakeside Drive Suite C, Sunnyvale, CA 94085 USA
| T: 408-773-8686 | F: 408-773-8298 | E: salesusa@vivotek.com

Ver 1.0

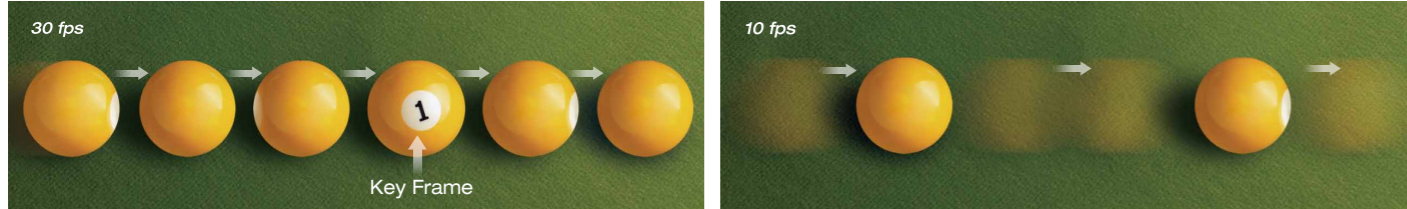


1080p Resolution at Full Frame Rate

The VIVOTEK FD8362/62E are able to transmit 30 fps @ 1080p with H.264 compression, while conventional megapixel cameras generally only achieve 10 to 15 fps due to hardware limitations.

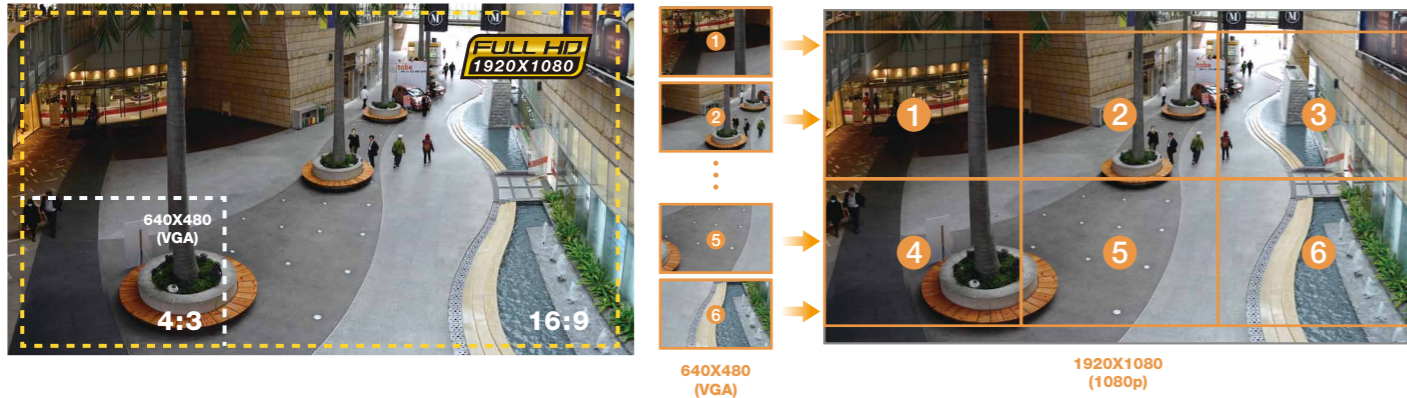


The ability to view and record footage at a full frame rate enables much more effective surveillance. For example, if a person or object of interest passes quickly through the camera's field of view during an event, a 10 fps frame rate might mean only a single frame with the target is captured, while the FD8362/62E would capture three frames, providing a fuller record of the event and more reliable identification of the target.



Wide Coverage, Exceptional Details

Compatible with the HDTV (16:9) standard, the FD8362/62E provide surveillance coverage for an area up to six times larger than possible with a VGA camera, significantly reducing the number of cameras required. The FD8362/62E are especially well suited to monitor broad spaces such as factories, warehouses, and building entrances. In addition, it is excellent for applications requiring accurate recognition for post-content analysis, such as the identification of people or license plates.



Consistent Surveillance Performance

• Adapted for High-contrast Lighting Conditions

When a camera is used in a high contrast, backlight, glare, or light reflective environment such as a building entrance, ATM, or window, a subject may appear dark and unrecognizable. WDR Enhanced technology compensates for the unbalanced lighting, restoring detail throughout the field of view, so as to give user unparalleled visibility to identify images.



• Clear Images 24/7

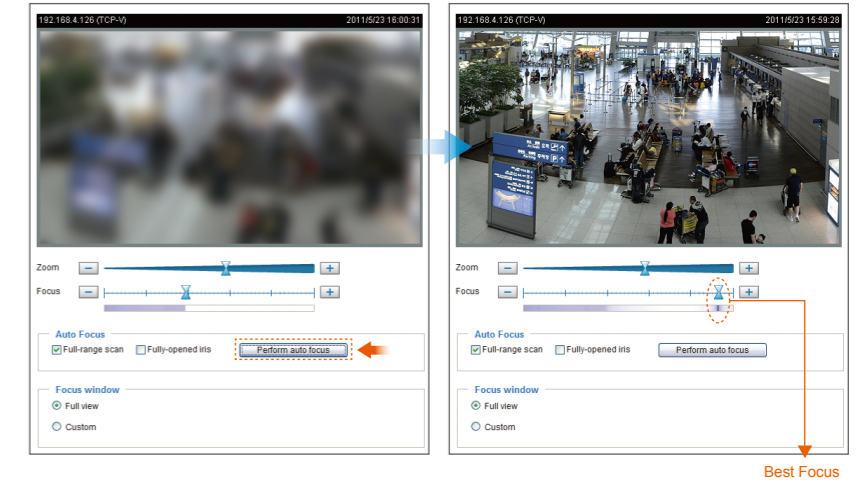
The FD8362/62E deliver day & night functionality with a built-in removable IR-cut filter. By day, the IR-cut filter screens out infrared light to reduce color distortion, and at night, the filter is removed to accept infrared light for higher lighting efficiency. Additionally, the built-in IR illuminators effective up to 15 meters provide increased light sensitivity at night, enabling the FD8362/62E to be used in total darkness.



Smart Focus System

• Remote Focus

To make installation and adjustment easier, the FD8362/62E adopt lenses with built-in stepping motors that the installer can use to remotely control the focal length and precisely adjust the camera focus via the configuration webpage, offering hassle-free installation and maintenance.



Extreme Weatherproofing

• Wide Temperature Range (FD8362E Only)

The wide temperature range (-40 °C~55 °C) enhances the FD8362E's performance and reliability under extremely harsh weather conditions.



• IP66-rated Housing

The weather-proof IP66-rated housing provides protection from dust and moisture, allowing the FD8362E to operate outdoors without any worries.



Enhanced Security

• Vandal-proof IK10-rated Housing

Equipped with a protective housing, the FD8362/62E are secured from vandalism, making it suitable for high-risk environments. The metal base and polycarbonate cover enable the FD8362/62E to withstand high impacts, thereby ensuring functional operation at all times.



FD8362/62E Fixed Dome Network Camera

2MP • Full HD • Smart Focus System • Vandal-proof

- 2-Megapixel CMOS Sensor
- Up to 30 fps @ 1080p Full HD
- Removable IR-cut Filter for Day & Night Function
- Real-time H.264, MPEG-4 and MJPEG Compression (Triple Codec)
- WDR Enhancement for Unparalleled Visibility in Extremely Bright or Dark Environments
- Smart Focus System for Remote and Precise Focus Adjustment
- Vandal-proof IK10-rated and Weather-proof IP66-rated Housing
- Wide Temperature Range for Extreme Weather Conditions (FD8362E)
- Built-in 802.3af Compliant PoE
- Built-in MicroSD/SDHC Card Slot for On-board Storage

